

PANDORA WS25350-UNV

WALL

PROJECT

DESCRIPTION

Dual square profile linear aluminum arms with rectangular wall mount. Inset opal polymeric diffusers. Finely textured plate or powder-coated finish. Wall emitting lights with rotational adjustment.



WS25350-BG-UNV
Brushed Gold



WS25350-BN-UNV
Brushed Nickel



WS25350-BK-UNV
Black



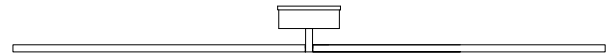
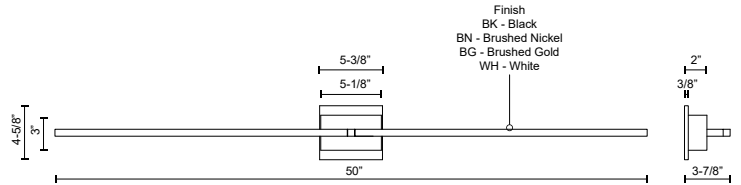
WS25350-WH-UNV
White

SPECIFICATION DETAILS

Fixture Dimensions	W50" x H4-5/8" x E3-7/8"
Light Source	LED with DC Driver
Wattage	41W
Total Lumens	2980lm
Delivered Lumens	BG-2204lm; BK-1930lm; BN-2202lm; WH-2254lm
Voltage	120-277V
Color Temperature	3000K
CRI (Ra)	90CRI
Optional Color Temps	2700K - 5000K Available, Minimum Order Quantities Apply
LED Rated Life	50,000 hours
Dimming	100% - 10%, TRIAC or ELV Dimmer (Not Included)
Diffuser Details	White Acrylic Diffuser
ADA Compliant	Yes
Location	Dry
Illumination Direction	Fontlight Illumination
Mounting Style	All Orientation; Wall;
CEC Title 24 JA8	Yes, JA8-2022
Canopy Dimensions	W5-3/8" x H4-5/8" x E2"
Paint Finish	BG01; BK02; BN02; WH02;
Height From Center	2-1/2"
Material	Aluminum + Acrylic

* For custom options, consult factory for details.

* For warranty information, please visit www.kuzcolighting.com/warranty



KUZCO

CANADA: 19054 28TH AVENUE - SURREY, BC V3Z 6M3

USA: 3035 E. LONE MOUNTAIN ROAD - LAS VEGAS, NV 89081

WWW.KUZCOLIGHTING.COM

© 2019 KUZCO LIGHTING. ALL RIGHTS RESERVED.

COMMENT

